

# HOW TO INSTALL

# RAGEWIRE

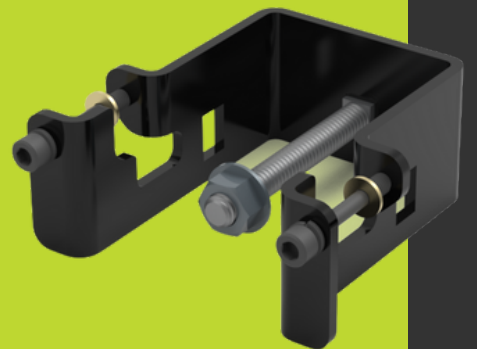
ROBOTIC  
AUTOMATION  
GUARDING  
EVOLVED

SIMPLE STEPS TO INSTALL YOUR ROBOTIC GUARDING

# 1

## ATTACH TOP BRACKETS TO POSTS

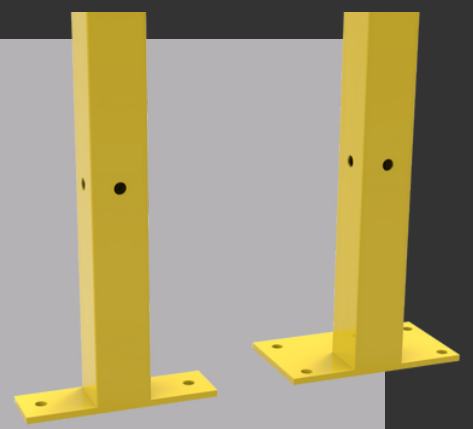
Use 3 brackets for 6' and 7' systems and 4 brackets for 8' systems.



# 2

## ANCHOR POSTS TO FLOOR

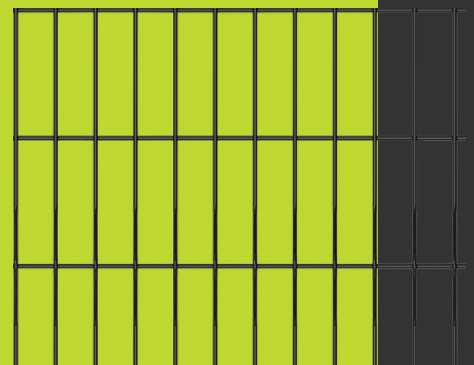
Begin with starter post and anchor to floor based on site conditions.



# 3

## HANG PANEL

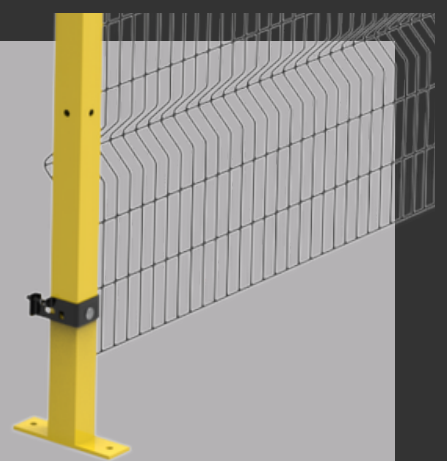
Loosen captive screws and hang mesh. Formed mesh comes in 5' panels. If smaller width is needed, field cut to size as needed and space next post as needed.



# 4

## ATTACH LOWER BRACKETS

Loosen all captive screws, attach lower brackets and allow horizontal wires to sit in bracket cavities. Finally, attach middle brackets and tighten all captive screws.



## REMINDERS

- Retighten all captive screws with included Allen wrench
- Adjustable hinge kits are provided for corner connections
- Swing and Slide door options are available

MANUFACTURED BY  
**SPACEGUARD**  
P R O D U C T S

(800) 841-0680 | [RageWireMesh.com](http://RageWireMesh.com)